

Community Assist

Fall 2007

assistance league®
Kansas City

Together...making our community better

A Word From Our President

The word “philanthropic” has its roots in the Greek language meaning love of mankind.

Our founder, Anne Banning, with this thought in mind, responded in 1906 to the San Francisco earthquake and fire by organizing a relief unit calling it **Assistance League**. So it was in 1935, that **National Assistance League®** was officially organized. When Mrs. Banning died in 1951, **Assistance League** was 10 chapters strong.



Bonny Roney
President

Today, **Assistance League** has grown to 117 chapters across the country with more than 25,000 volunteers, who serve their respective communities. Since our inception in 1983, **Assistance League of Kansas City** has grown to nearly 300 members.

I've been blessed to have met from across the country some of these 25,000 volunteers and I have found one thing. They are just like we are in Kansas City, in that they too have the same passion and it is the “love of mankind” and what we can do to make our community better.

We identify and respond to the needs of the community through our own philanthropic programs. We respond by reaching out to others as a friend to promote self-esteem, comfort, safety and the emotional well-being of those served and those serving. Together ... making our community better. This year our theme carries this same general feeling, “Reaching out ... to give back.” Maya Angelou said “I have found that among it's other benefits, giving liberates the soul of the giver.”

We thank you, our volunteers, who with this same passion have worked tireless hours to benefit others and give back. We thank our contributors, that is individuals, businesses, corporations and foundations, who help to fund our services to the community by “Reaching out ... to give back.”

Assistance League of Kansas City is a local chapter of National Assistance League, which has three chapters in Missouri and 117 chapters in 29 states. Assistance League is a not-for-profit volunteer organization, which began in 1935. Each chapter of Assistance League raises its own funds to support its local philanthropic programs. Chapters across the United States returned millions of dollars to their own communities during 2006-07.

2006-2007 Assistance League of Kansas City consisted of:

- * 148 Chapter Members
- * 73 Auxiliary Members
- * 37 Associate Chapter Members* 8 Associate Auxiliary Members
- * 36 Assisteens®
- * 9 PALs
- * 1 Community Associate Member
- * 7 Advisory
- ** TOTAL 319

Assistance League of Kansas City Board of Directors

Bonny Roney
President

Jane Bromberg
Linda Blocker
Babs Krueger
Shelly Clinkenbeard
Suzanne Locke
Faye Ann Roberts
Jan Hall
Linda Magee
Becky Admire
Ann Barnes
Penny Merrill
Prilly Lary
Lee Miller
Judy Frame

Heartland Auxiliary

Carol Nolting
Chairman

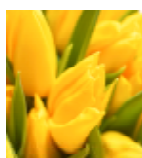
Sandra Browning
Bobbie Fisher
Shirley Hall
Sherry Sweat
Nancy Gower
Carol Glaeser
Penny Merrill
Judy Spinner
Mary Ann St. Clair
Cheryl Rittman
Marjorie Gutelius
Joy George
Holly Johansen

Assistance League of Kansas City is able to continue its programs through the financial generosity of individual contributors, numerous companies, grants, funds generated from sales at THE ReSALE SHOP, and our fundraisers:



The **2006 Annual Poinsettia Sale** supplied over \$26,000 in funds for Assistance League of Kansas City's philanthropic programs. Buyers received beautiful red, white, and pink plants to decorate with or give as gifts during the holiday season. Over 4000 plants were purchased to help Assistance League of Kansas City in community service. Last year a delivery van from Steamatic was used for orders in excess of 50 plants to one location. Members will be selling poinsettias again this October and November for delivery the last of November.

Sock It To 'Em is our annual direct mail fundraiser to benefit Operation School Bell®. Our mailing list was updated as our members stuffed and labeled the more than 1000 invitations to participate in giving a cash donation for this worthy cause. The Kansas City Star featured an article to kick off the fundraiser.



Our own members had a chance to participate in the annual **spring plant sale**. Plants provided by Westland Lansdcape Co. provided over 200 pansies, geraniums and greenery for the members to purchase.

Our beautiful **Christopher Radko** ornament, depicting one of our national programs, Operation School Bell, is being sold for \$25 at Anna Marie's in Liberty and THE ReSALE SHOP in Kansas City. These make wonderful gifts for Assistance League of Kansas City members, contributors, and officials that support Assistance League of Kansas City. Contact us at 816-453-6011 to arrange your purchase.



THE ReSALE SHOP continues to be a strong resource to finance our philanthropic programs. The 27 volunteer member committee meets weekly to sort through the many donations received throughout the week. All donations are checked for cleanliness and serviceability before being placed on the sales floor. All items are reasonably priced and gift certificates are available for purchase. THE ReSALE SHOP proudly celebrated its 10th anniversary this August with special sales events.

The Heartland Run/Walk, located at English Landing Park in Parkville, Missouri, is the primary fundraiser of Heartland Auxiliary. Over 350 runners participated with surplus of more than \$16,000. This year's Run will be September 23, 2007. You can download a registration form online at www.alkc.org.

The Heartland Auxiliary also worked at Barnes and Noble to earn 10% of all purchases made if customers turned in our voucher with their purchases. Members volunteered by wrapping books at the Book Fair, story telling and a fashion show from THE ReSALE SHOP.

Helping Our Community This Past Year

Assistance League of Kansas City's Philanthropic programs that helped our community during the 2006-2007 year

Assault Survivor Kits®

Over 224 **Assault Survivor Kits** were prepared for MOCSA, COVERSA and St. Luke's Hospital. Because of the increase in hospital visits, 100 more kits were completed to be distributed to victims of assault and abuse. Each kit contained knit top and pants, underwear, toothpaste, toothbrush and comb. These kits offer the first step to recovery after a sexual assault. Supplies for this program were \$6,500.

Operation School Bell



In our 15th year of operation we served more than 1200 children in the Park Hill, North Kansas City, Liberty, Smithville, Platte City and Kearney School Districts. Each child received two new pairs of jeans, cargo or running pants (or skirt with tights), two tops, 6 pairs of underwear, 6 pairs of socks, hat, gloves, book, a \$12 Payless Shoe voucher, a \$5 coupon at THE ReSALE SHOP and a health kit containing soap, shampoo, comb, toothbrush and toothpaste. Two of our volunteers even shortened jeans and running pants. Students are referred to Operation School Bell by school counselors. Each student returned to school with new clothes and renewed self-esteem. Each child's clothing, health kit, and book total \$80.

Operation Hug

Members bagged 3559 bears in the past year to give to children in traumatic situations such as auto accidents, emergency room visits, domestic disputes, etc. With your generous contributions to the fundraisers for Assistance League of Kansas City and purchases at THE ReSALE SHOP we are able to bring smiles to the faces of children in crisis. Expenses for this program were over \$16,000.

I'm In Charge

This is a self-care course for elementary children. It provides students with information on how to deal with emergency and non-emergency situations when they are alone at home or away from home. The school counselors are provided with workbooks and a video for instruction. In 2006-2007, 5306 students in 73 area schools were served by the I'm In Charge program. Our expenses were over \$4,500. Our own Cathy Stone appeared on Channel 41's mid-morning news program, Kansas City Live.

Assisteens

This year's membership included 40 students representing Liberty School District, North Kansas City School District, Smithville School District, and Rockhurst High School. Assisteens are hoping to expand to include more districts in the Northland. They were very busy this last year as they worked assembling over 1200 health kits that were distributed by Operation School Bell. They also participated in the Heartland Auxiliary's Heartland Run/Walk, Trunk or Treat, worked at a food bank and a food kitchen, bagged bears for Operation Hug, and made treat bags, cards and hosted various parties at Heritage Village, an assisted living community in the Northland. Our major service project was our Adopt a Soldier program. They made treat bags and cards for a platoon and squad in Iraq. Also, they made no-sew blankets, cards, and treat bags for a military hospital in Germany. Your child could participate with us in giving back to the community by being an Assisteens. He or she must be in grades 7-11.

Human Outreach Program

The Human Outreach Program contacted Synergy Services out of Parkville for their Angel Tree project for the fall of 2006. Assistance League of Kansas City members selected all 50 of the angels and participated in getting a gift ready for the Mentor for Youth program.

Operation Foster Children

The Heartland Auxiliary's **Operation Foster Children** provided assistance to foster children and wards of the the court in Clay and Platte counties. Requests made by social workers or school counselors included items (such as clothing, eye glasses, and shoes), tutoring, educational obligations, high school fees, medical services, and transportation fees.

Children's Mercy Hospital Volunteer Program

The Heartland Auxiliary's other philanthropic program is the **Children's Mercy Hospital Volunteer Program**. Members volunteer on Thursday and Tuesday to assist in the waiting room.

About Us . . .

ASSISTANCE LEAGUE of KANSAS CITY has a membership of multi-talented volunteers ranging in age from 13 through adult. Chapter and Auxiliary memberships both require a defined level of commitment of time and financial support.

There are so many ways to help



- Shop or donate items to THE ReSALE SHOP
- Purchase a beautiful Radko Ornament
- Sponsor or participate in the annual Heartland Run
- Purchase poinsettia plants in October
- Support local programs through your financial gift
- Ask us to speak at your local organization, church or business



6101 N. Chestnut
Gladstone, MO 64119

Mission Statement

Assistance League of Kansas City responds to the needs of the community through its philanthropic programs. It responds by reaching out to others as a friend, to promote self-esteem, comfort, safety and the emotional well-being of those served and of those serving.

Assistance League

THE ReSALE SHOP

(816) 455-4485

Visit our Web Site:

www.alkc.org

US POSTAGE

PAID

Kansas City, MO
Permit No. 621